

Stittsworth meats



**Northern Minnesota's
Steak Headquarters**

609 S. 4th St, Bemidji
2 Blocks East of Northwest Tire

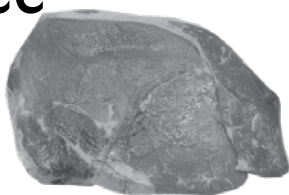
751-3627

**NOW
AVAILABLE**

**STITTSWORTH BRATS AT THE SANFORD
CENTER CONCESSIONS DURING EVENTS**

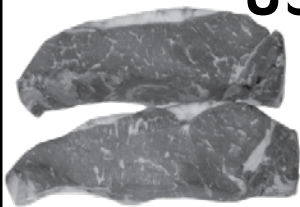
**USDA Choice
Top Sirloin**

\$4.99_{lb}



**USDA Choice
New York
Strip**

\$7.99_{lb}



**Lean Ground
Beef**

\$2.69_{lb}



**Extra, Extra
Lean Ground
Beef**

\$2.79_{lb}



R001541775



Open Mon-Fri 8-6 Sat. 8-5 Sun. CLOSED
E.B.T. Cards, Visa, Mastercard & American Express Accepted
www.facebook.com/stittsworthmeats